

Install Process Overview

Residential Elevator



833-364-8700
www.pollock-residentialelevators.com



Installing your Residential Elevator

A simple overview

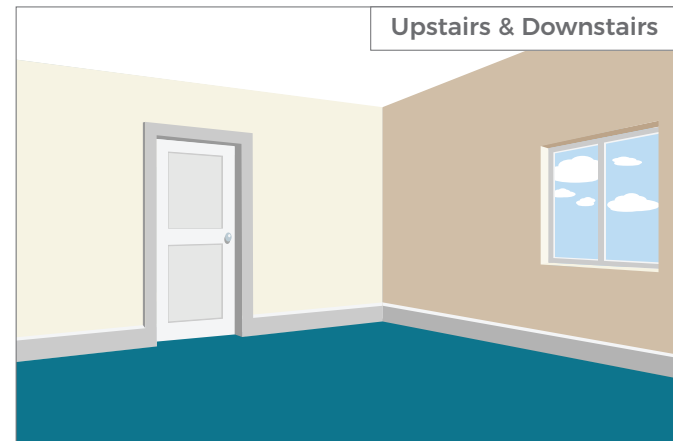
Lift Features

- Holds up to 500 lb (230 kg).
- Safety sensors stop the lift if anything gets in the way.
- Available in a variety of colors and sizes.
- Smart display shows status and any maintenance needs.



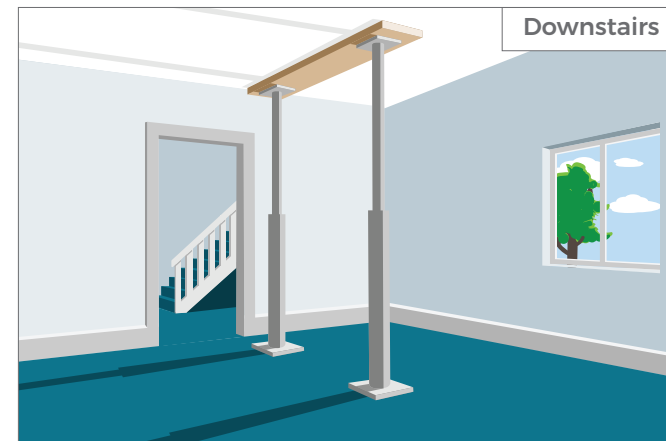
833-364-8700

www.pollock-residentialelevators.com

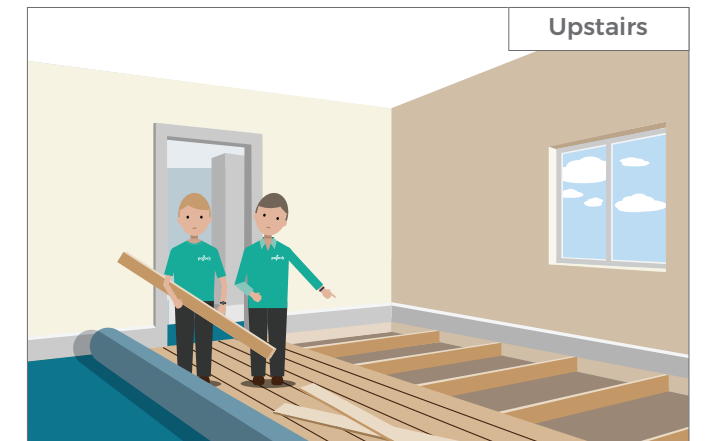


The space around the installation must be cleared by the home owners on both floors before building preparation can take place.

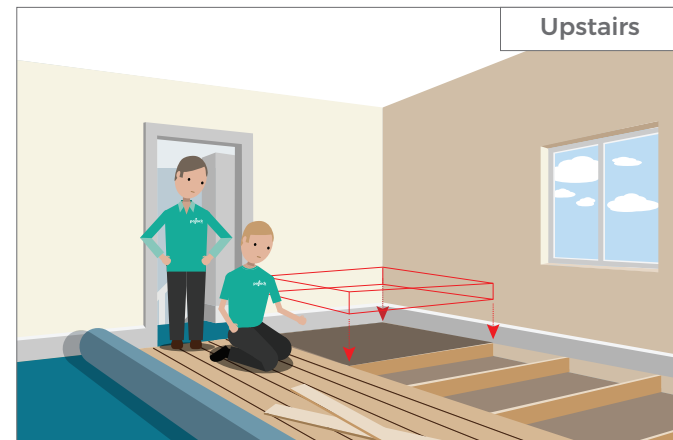
The installation areas should be fully vacated with the door closed to prevent any entry.



Builders will board the downstairs ceiling with props before creating the aperture to ensure safety for the installation team.



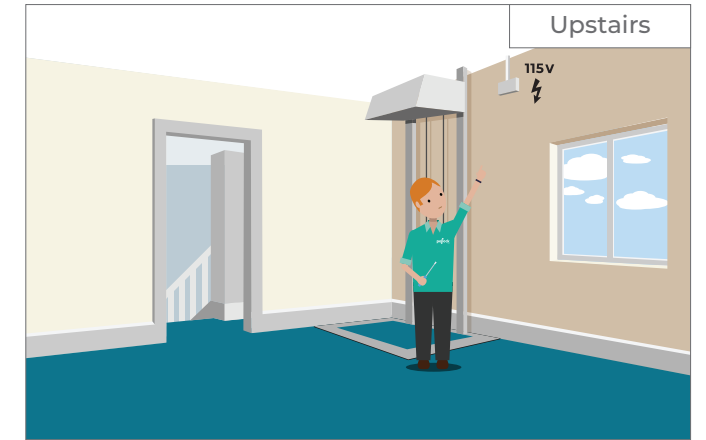
The builders will remove the carpet and the necessary flooring to form the aperture.



Support timber will be placed on the aperture as a temporary cover for safety before the installers come.

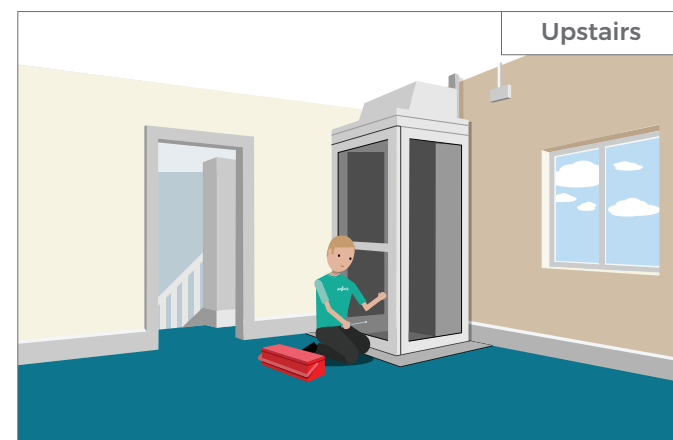


The carpet will be rolled back and cut around the aperture. It will be used to cover the upper trap door to ensure the floor looks complete when the lift is downstairs.



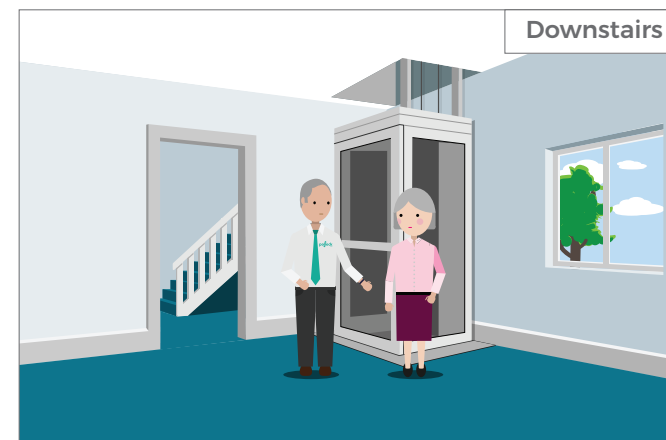
The electrical contractor will assess the site and discuss the electrical requirement options with the home owner.

The electrical contractor will isolate the work area, and install a dedicated power supply.



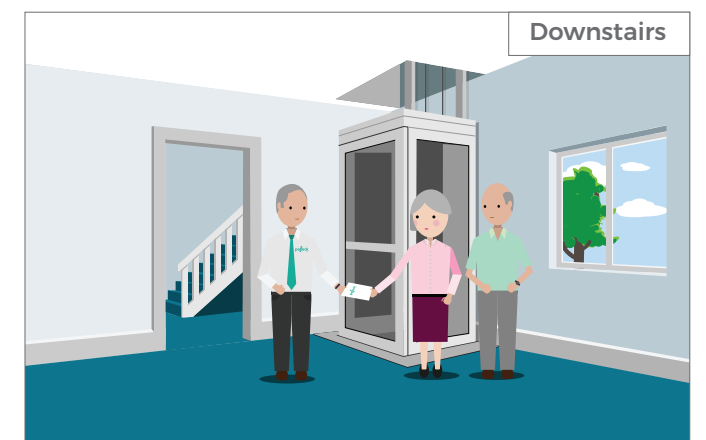
Your Pollock Residential Elevator will be installed.

Before the team leaves, they will test the lift operations and all safeties.



We will brief you on the operations of your Pollock Residential Elevator.

Your installation team will show you all the safety features and make sure you are familiar with them.



Your installation team will hand over your Pollock Residential Elevator. You will also be provided with an operational manual and service log for your lift, ensuring you have the confidence and independence to stay in your home.